

# Keyboard ARM Upgrade instructions

1. Set the dial switch at the bottom of the keyboard to "1--OFF,2--OFF".



2. The keyboard is powered on and connected to the computer via a Type-C cable.



3. Open the ARM upgrade tool "FlyMcu" on your computer.

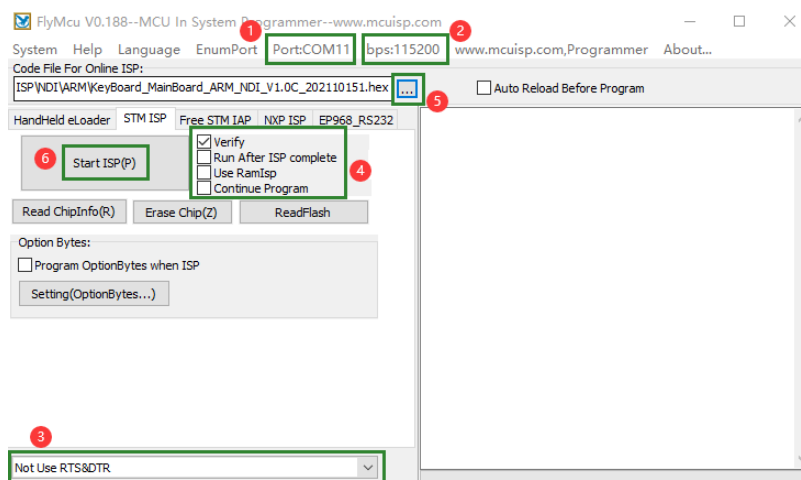


2014-09-02 12:39

应用程序

2,591 KB

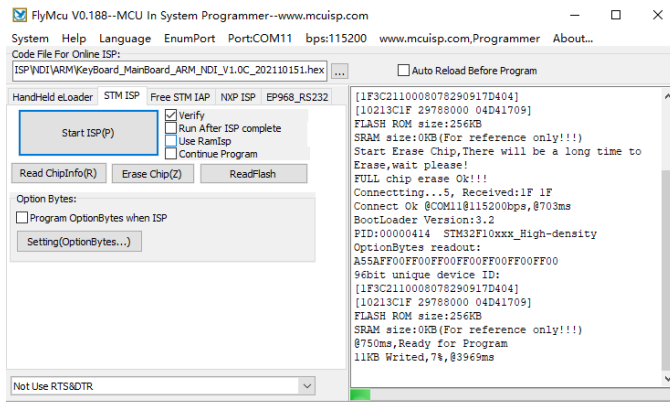
4. The "FlyMcu" interface is as follows:



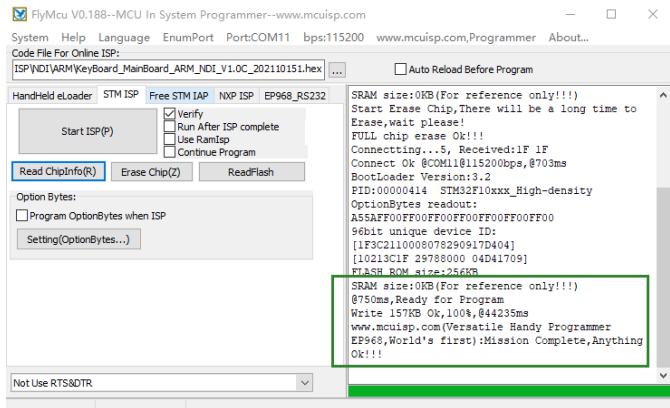
- ① Select the port number for Type-C cable access here.
- ② Select the baud rate 115200.
- ③ Select "Not Use RTS&DTR" here.
- ④ Only check "Verify" here.

- ⑤ Select the "XXX.hex" file to be upgraded here.
- ⑥ After setting the above 5 places, click "Start ISP(P)" to upgrade.

5. The upgrade process interface is as follows:



6. The following is displayed after a successful upgrade:



7. Unplug the power, set the dial switch at the bottom of the keyboard to "1--ON,2--ON", restart the keyboard can be used normally.